

# WIND FARM SERVICE VESSELS

ENERGY VESSELS OFFSHORE (EVO)

## MODEL: EVO24-FA-12AP

EVO offers workboats which have been specifically designed to operate as service vessels in the offshore energy industry. The Wind Farm Service Vessel range is based on an efficient catamaran hull form and with semi-displacement or high speed models available. Each craft can be configured to client requirements.

## FEATURES

- 24 Metres LOA
- 12 passengers
- Environmentally clean and energy efficient
- Capable of operating offshore in a wide range of sea-states and weather conditions
- Have service speeds of over 30 knots (40 knots max)
- Are stable and provide maximum crew/passenger comfort
- Incorporate technically advanced design foil-assisted hull form and propulsion
- Have superior at rest stability characteristics in rough sea-states
- Incorporate latest at sea crew transfer systems
- Have superior load/passenger carrying capacity at high service speeds
- Are constructed to European classification society and flag state requirements



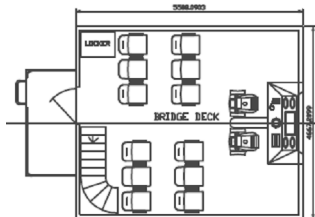
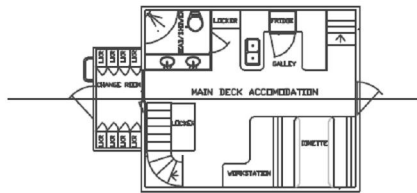
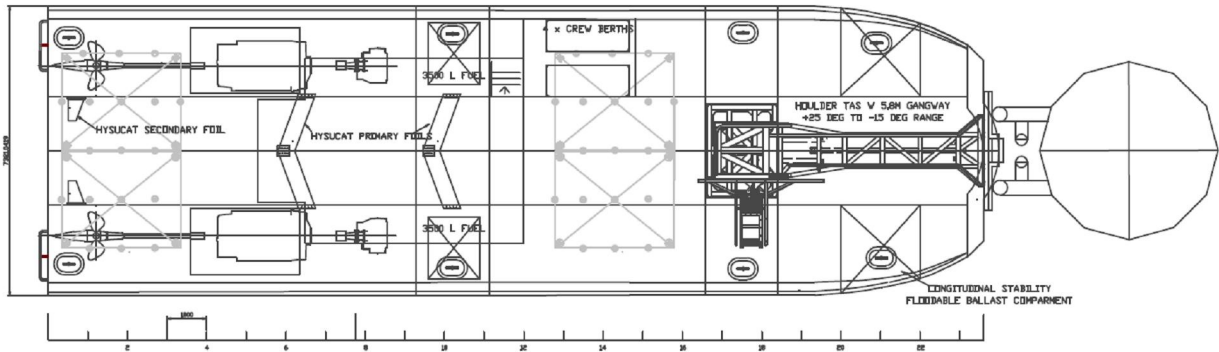
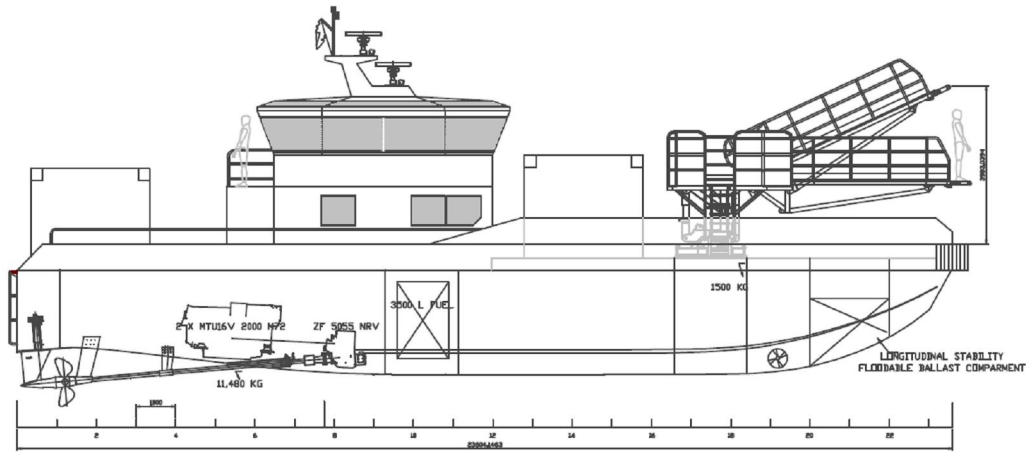
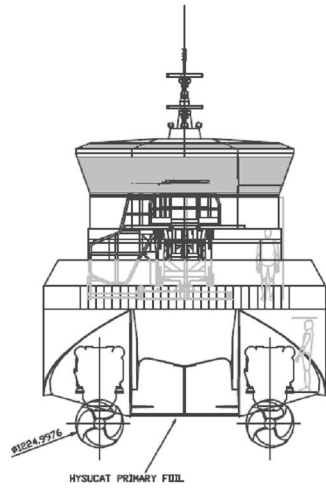
Servicing the  
Offshore Energy  
Industry

PO Box 840  
Whangarei 0140  
New Zealand

contact:  
Ph: +64 9 430 3148  
Fax: +64 9 430 3147  
[info@energyvessels.com](mailto:info@energyvessels.com)  
[www.energyvessels.com](http://www.energyvessels.com)

SEE OVERLEAF FOR GA & SPECIFICATION

**EVO**  
ENERGY VESSELS OFFSHORE



**EVO24-FA-12 WIND FARM SUPPORT VESSEL - PROVISIONAL SPECIFICATION**

LOA	24m	GEN SET	CAT C2.2 T 28.8kVA
BEAM	7.32m	BOW THRUSTERS	2 X 50 kW
FOIL SYSTEM	HYSUCAT SA	FENDERING	RGS INTELLIGENT
1/2 LOAD DSPL	65T	DECK SPACE FWD	48m <sup>2</sup>
DEAD WEIGHT	12T	DECK SPACE AFT	31m <sup>2</sup>
MAIN ENGINES	2X MTU 16V 2000 M72 1440 Kw@2250RPM	CARGO WEIGHT	15T
GEARBOXES	SERVOGEAR ECOFLOW ZF 5055 NVR 3.429:1	CLASS	DNV + 1A1 HSLC R2
90% MCR	39KTS @ 2170 RPM		
RANGE @90%	365 NM W/ 20% RESERVE		
60% MCR	34 KTS @ 1985 RPM		
RANGE AT 60 %	425 NM W/ 20% RESERVE		