



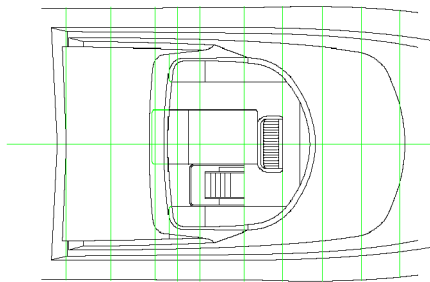
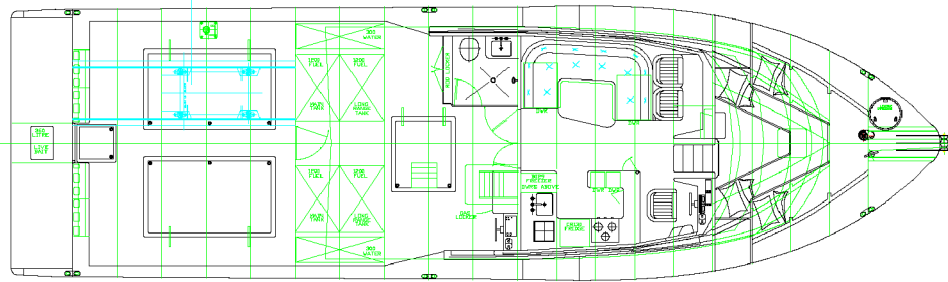
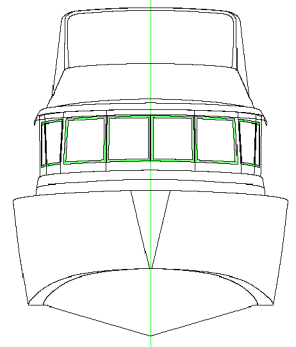
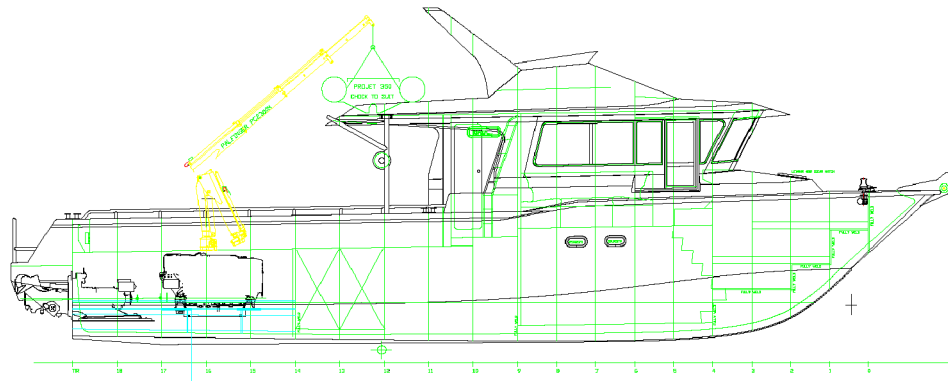
ENERGY VESSELS OFFSHORE



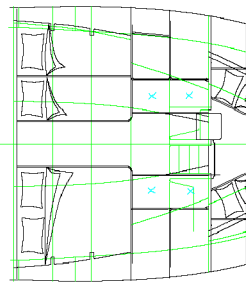
### 17 MTR MULTI PURPOSE SERVICE VESSEL

<b>LOA:</b>	17mtrs	<b>Year:</b>	NEW
<b>Beam:</b>	4.9 m	<b>Builder:</b>	EVO
<b>Draft:</b>	0.9m	<b>Flag:</b>	Australian
<b>Displacement:</b>	20 tons	<b>Designer:</b>	Barnett Offshore Design Ltd
<b>Water cap:</b>	1,200 litres	<b>Hull &amp; Super:</b>	Aluminium
<b>Fuel cap:</b>	4,800 litres	<b>Engines:</b>	2 x Caterpillar C18, 875 bmp
<b>Range:</b>	1000 nm @ cruise of 20kts	<b>Drives:</b>	2 x Hamilton Jets with Blue Arrow Controls
<b>Classification:</b>	Western Australia Department of transport In 2-A class	<b>Speed:</b>	Cruise 18 knots @ 80%, max 28 knots
<b>Location</b>	<b>New - TBB – New Zealand</b>	<b>Generators:</b>	1 x C 2.2 18ekw marine genset
		<b>Crew acc:</b>	Optional – 8 in 4 cabins shown
		<b>Price:</b>	<b>NZD \$ POA</b>

[Type text]



FLYBRIDGE



LOWER CABIN

HIGGA

Copyright ©

This drawing must not be copied nor used for manufacturing purposes without the written permission of Barnett Offshore Design Ltd. Neither is it to be handed over to or communicated to a third party. INFRINGEMENT WILL LEAD TO PROSECUTION

GENERAL ARRANGEMENT			
15.3M X 4.9M WORKBOAT			
for BFHFT			
Barnett Offshore Design Ltd			
Marine Designers - Builders - Consultants			
Sheep Valley Rd, Stenock, New Zealand			
SCALE	1:33.33	DATE	07-05-09
DRAWN BY	TJFB	CHECKED	TJFB
SHEET NUMBER	001	DESIGN NUMBER	0909