

# WIND FARM SERVICE VESSELS

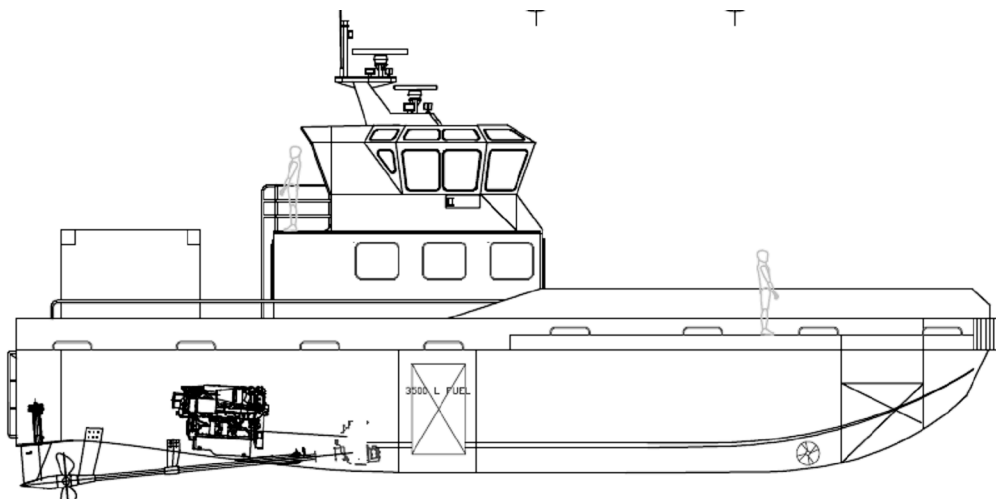
ENERGY VESSELS OFFSHORE (EVO)

## MODEL: EVO21-FA-12

EVO offers workboats which have been specifically designed to operate as service vessels in the offshore energy industry. The Wind Farm Service Vessel range is based on an efficient catamaran hull form and with semi-displacement or high speed models available. Each craft can be configured to client requirements.

## FEATURES

- 21 Metres LOA
- 12 passengers
- Environmentally clean and energy efficient
- Capable of operating offshore in a wide range of sea-states and weather conditions
- Have service speeds of over 30 knots (40 knots max)
- Are stable and provide maximum crew/passenger comfort
- Incorporate technically advanced design foil-assisted hull form and propulsion
- Have superior at rest stability characteristics in rough sea-states
- Have superior load/passenger carrying capacity at high service speeds
- Are constructed to European classification society and flag state requirements



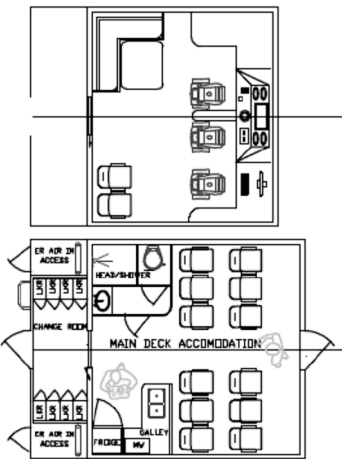
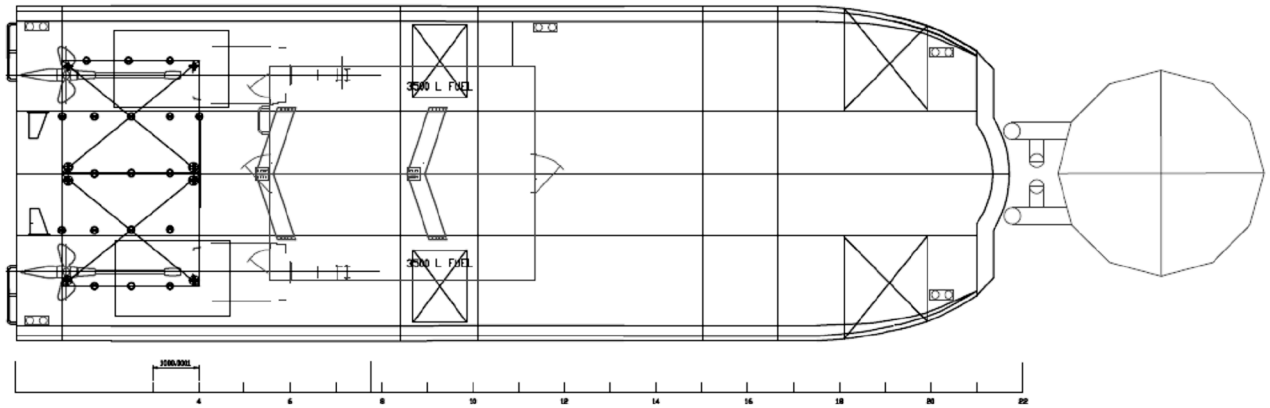
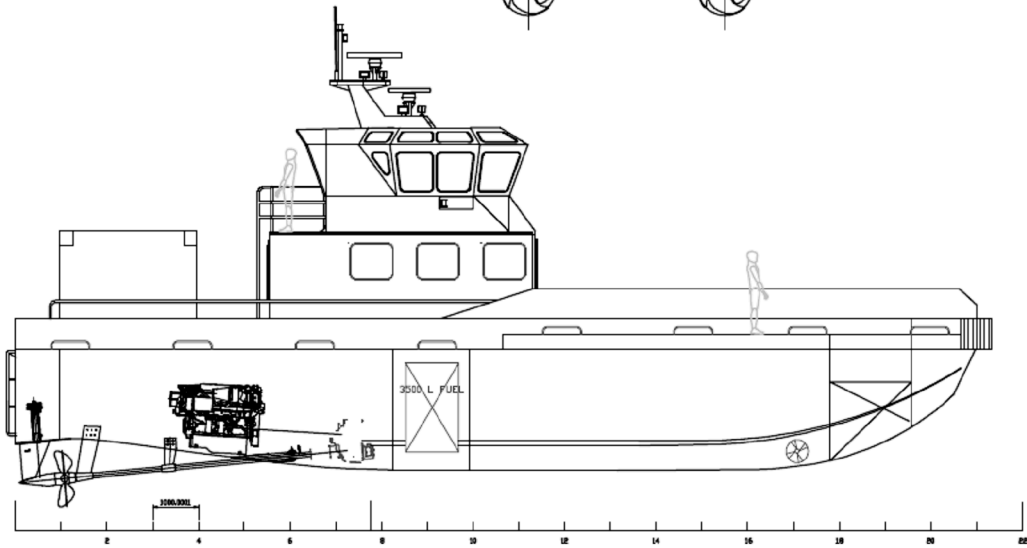
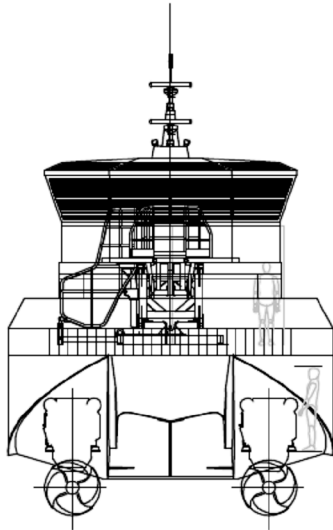
Servicing the  
Offshore Energy  
Industry

PO Box 840  
Whangarei 0140  
New Zealand

contact:  
Ph: +64 9 430 3148  
Fax: +64 9 430 3147  
[info@energyvessels.com](mailto:info@energyvessels.com)  
[www.energyvessels.com](http://www.energyvessels.com)

SEE OVERLEAF FOR GA & SPECIFICATION

**EVO**  
ENERGY VESSELS OFFSHORE



EV021-FA-12 WIND FARM SUPPORT VESSEL - PROVISIONAL SPECIFICATION			
LOA	21m	GEN SET	CAT C2.2 T 28.0kVA
BEAM	7.32m	BOW THRUSTERS	2 X 35 kW
FOIL SYSTEM	HYSUCAT SA	FENDERING	RG5 INTELLIGENT
1/2 LOAD DSPL	42T	DECK SPACE FWD	50m2
DEAD WEIGHT	8T	DECK SPACE AFT	29m2
MAIN ENGINES	2X CATERPILLAR C32 Kw@2100RPM	CARGO WEIGHT	15T
DRIVE SYSTEM	SERVOGEAR ECOFLOW HD 295 UR/UL @ 3.3:1	CLASS	DNV + 1A1 HSLC R2
100%MCR	42KTS @ 2100 RPM		
RANGE @100%	480 NM W/ 20% RESERVE 11.6 L/NM		
82% MCR	37 KTS @ 1965 RPM		
RANGE AT 82%	504 NM W/ 20% RESERVE 14.4 L/NM		